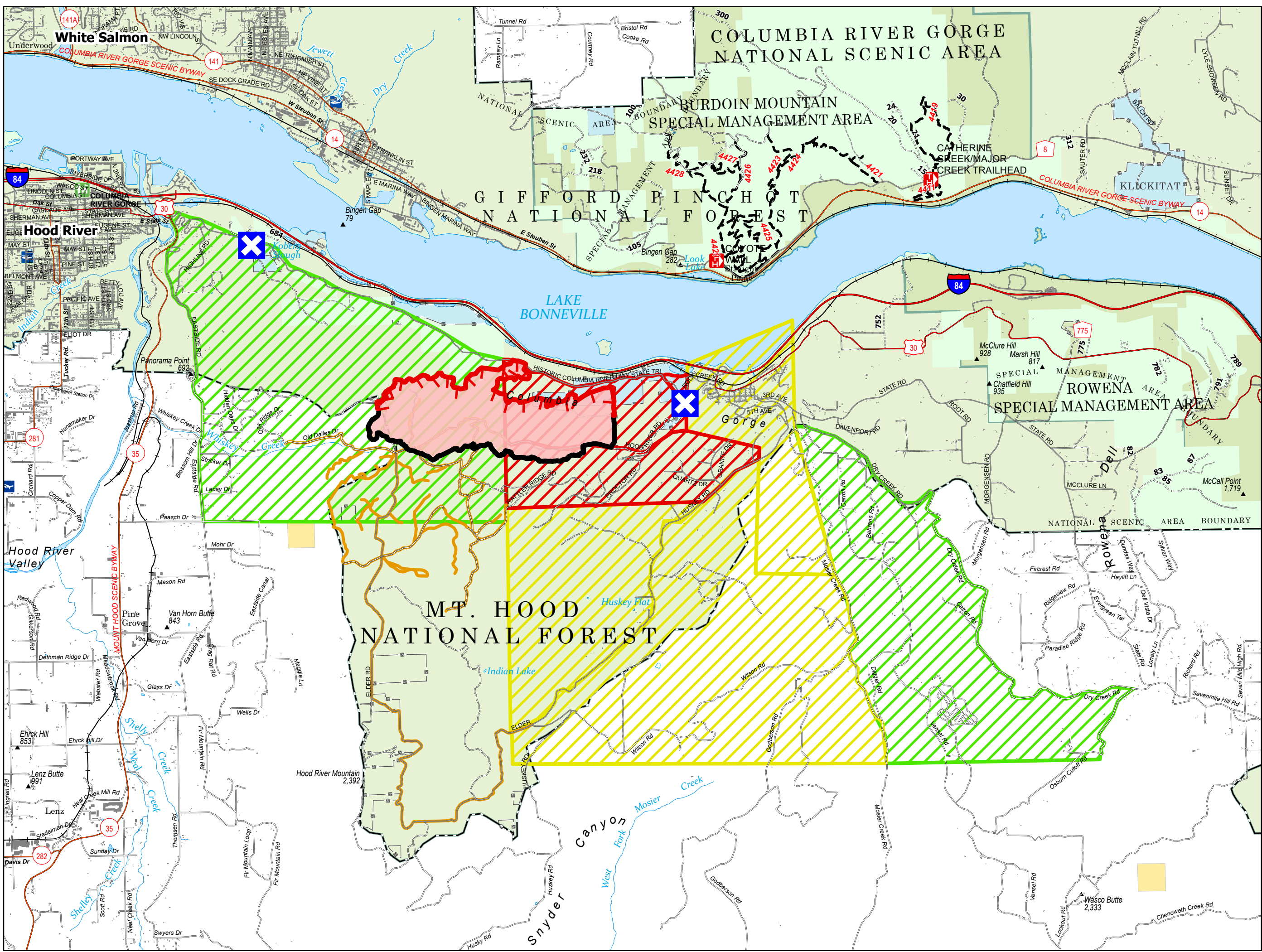
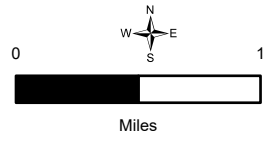


**Public Information**  
 Microwave Tower  
 OR-954S-000661  
 07/27/2024  
 806 acres



- Microwave Tower Evacuation Zones
- Ready
  - Set
  - Go
  - Major Road Closures
  - Contained
  - Uncontained
  - Wildfire Daily Fire Perimeter
  - Closure
  - Region/Supervisor Office
  - Trail
  - Primary Highway
  - Secondary Highway
  - Road, Unspecified
  - Structure FEMA
  - USFS Administrative Forest
  - Forest Service Land
  - Other Management Boundary
  - State Lands
  - Bureau of Land Management

More Information:  
<http://incweb.nwcg.gov>



7295024, 1544 Rts  
 North American 1983 Datum, LLLong Grid